

REVISIONS				
ZONE	REV	DESCRIPTION	DATE	APPROVED
NA	D1	Remove "Matte" from NOTE 2; add RoHS exemption	1/17/2020	PKapa

STANDARD TABLE

BODY HEIGHT
A -- TYPE 1
B -- TYPE 2
SEE TABLE

NUMBER OF SPACES
PER LAYER
01, 02, 03...10, etc.

NUMBER OF SPACES
IS EQUIVALENT TO THE
NUMBER OF PINS MINUS
ONE PIN

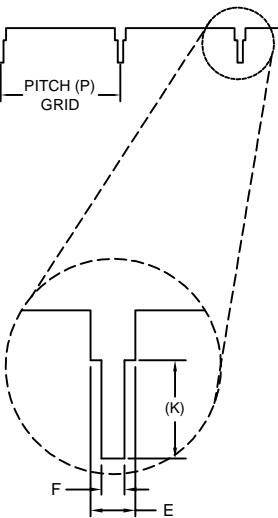
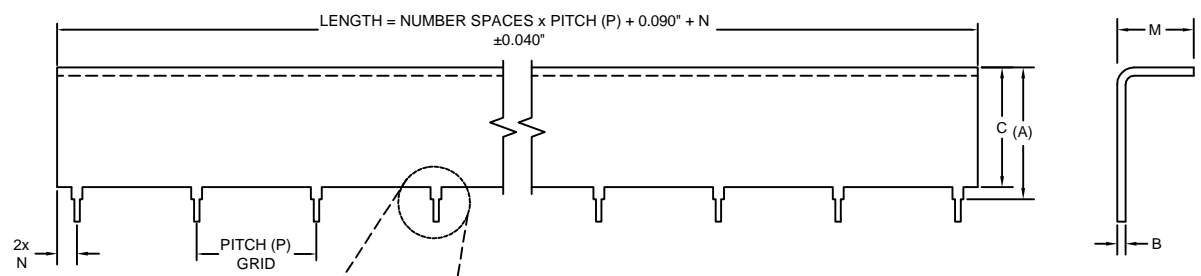
EFI-X-XXX

PITCH (P)
DISTANCE BETWEEN PINS
ON A LAYER

- 1 -- 0.250"
- 2 -- 0.500"
- 3 -- 0.700"
- 4 -- 0.750"
- 5 -- 1.000"
- 6 -- 1.250"
- 7 -- 1.400"
- 8 -- 1.500"

TYPE	DIMENSIONS (INCHES)							
	A	B	C	E	F	K	M	N
1	0.34	0.040*	0.29	0.078	0.045	0.135	0.29	0.12
2	0.32	0.020*	0.27	0.085	0.020	0.175	0.27	0.12


TOLERANCES: .XXX ±0.010 .XX ±0.030 (* THICKNESS TOL. PER QQ-B-613D)



Notes:

1. Material: Brass per QQ-B-613D Half Hard Alloy 260.
2. Finish: Tin plated per ASTM B 545 (Mil-T-10727) (Ends of conductors are not plated).
3. RoHS Compliant exemption Annex III 6(c).

EFFECTIVE DEC. 10, 2015

UNLESS OTHERWISE SPECIFIED DIMENSIONS ARE IN INCHES		 <p>1075 RICHARD AVE. SANTA CLARA, CA 95050 (408)727.5218 FAX (408)988.3342 E-MAIL : eng@e-fab.com</p>	
CAD ENG. ACoutinho	DATE: 12/3/2015		
CHECK JBanks	DATE: 12/3/2015	CUSTOMER	
LINEAR TOLERANCES .XXX = ± -- .XX = ± -- .X = ± -- SEE TABLE		E-Fab, Inc.	
ANGULAR TOLERANCES ± °			
MATERIAL NOTE 1 FINISH NOTE 2		SIZE A FSCM NO. NA SCALE NA	DWG NO. EFI-X-XXX TITLE: Brass Stiffener L Formed FILE No. EFI-X-XXX
		REV D1	SHEET 1 of 1

REVISIONS				
ZONE	REV	DESCRIPTION	DATE	APPROVED
NA	F1	Remove "Matte" from NOTE 2 ref. dim . 0.100	1/17/2020	PKapa

STANDARD TABLE

BODY HEIGHT
 1 -- 0.250"
 2 -- 0.375"
 3 -- 0.500"
 4 -- 1.000"

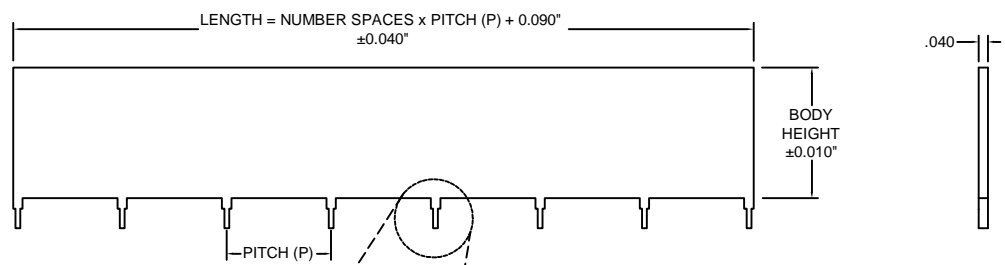
NUMBER OF SPACES
 PER LAYER
 01, 02, 03...10, etc.

NUMBER OF SPACES
 IS EQUIVALENT TO THE
 NUMBER OF PINS MINUS
 ONE PIN

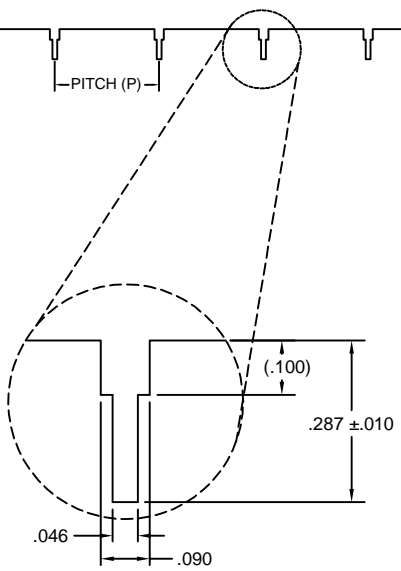
EFI-XXXX0

NOT COATED

PITCH (P)
 DISTANCE BETWEEN PINS
 ON A LAYER
 1 -- 0.500"
 2 -- 1.000"
 3 -- 1.500"




TYP 0.040
 ALL CORNER RADIUS
 PIN DETAIL



Notes:

1. Material: Copper 0.040" thk per ASTM B152/B152M Half Hard Alloy 110.
2. Finish: Tin plated per ASTM B 545 (Mil-T-10727) (Ends of conductors are not plated).
3. RoHS Compliant exemption Annex III 6(c).

EFFECTIVE DEC. 10, 2015

UNLESS OTHERWISE SPECIFIED DIMENSIONS ARE IN INCHES				1075 RICHARD AVE. SANTA CLARA, CA 95050 (408)727.5218 FAX (408)988.3342 E-MAIL : eng@e-fab.com			
CAD ENG. ACoutinho	DATE: 12/3/2015			CUSTOMER		E-Fab, Inc.	
CHECK JBanks	DATE: 12/3/2015	LINEAR TOLERANCES .XXX = ± .005 .XX = ± .010 .X = ± .020		THE DWG AND SPECIFICATION CONTAINED HEREON ARE PRO- PRIETARY AND MUST NOT BE USED, COPIED, REPRODUCED OR OTHERWISE DEALT WITH NOR ITS CONTENTS COMMUNICATED TO OTHERS EXCEPT IN ACCORDANCE WITH WRITTEN INSTRUCTIONS RECEIVED FROM E-FAB, INC.			
ANGULAR TOLERANCES ± °						SIZE	FSCM NO.
MATERIAL NOTE 1		FINISH NOTE 2		A	NA	TITLE: Non-coated Stiffener	F1
SCALE		NA	FILE No.	EFI-XXXX0	SHEET	1 of 1	

REVISIONS				
ZONE	REV	DESCRIPTION	DATE	APPROVED
NA	F1	Remove "Matte" from NOTE 2 ref. dim. 0.100	1/17/2020	PKapa

STANDARD TABLE

BODY HEIGHT
 1 -- 0.250"
 2 -- 0.375"
 3 -- 0.500"
 4 -- 1.000"

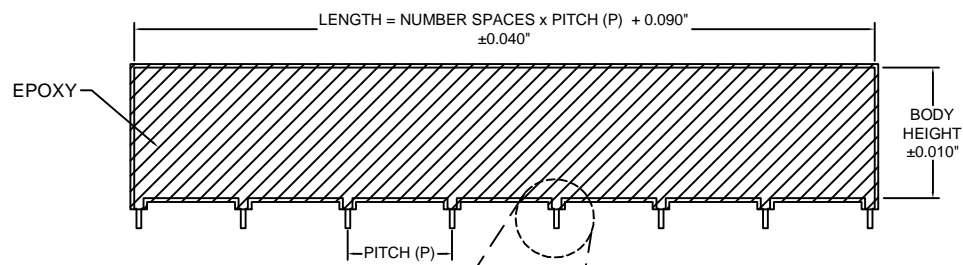
NUMBER OF SPACES PER LAYER
 01, 02, 03...10, etc.

NUMBER OF SPACES IS EQUIVALENT TO THE NUMBER OF PINS MINUS ONE PIN

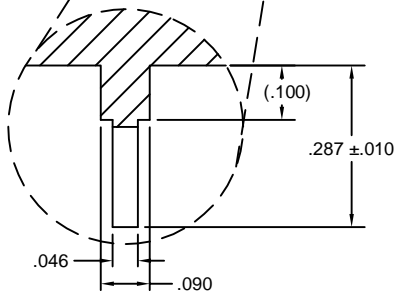
EFI-XXXX1

EPOXY COATED

PITCH (P)
 DISTANCE BETWEEN PINS ON A LAYER
 1 -- 0.500"
 2 -- 1.000"
 3 -- 1.500"




TYP 0.040
 ALL CORNER RADIUS
 PIN DETAIL



Notes:

1. Material: Copper 0.040" thk per ASTM B152/B152M Full Hard Alloy 110.
2. Finish: Epoxy coated over Tin plated per ASTM B 545 (Mil-T-10727) (Ends of conductors are not plated).
3. RoHS Compliant exemption Annex III 6(c).

EFFECTIVE DEC. 10, 2015

UNLESS OTHERWISE SPECIFIED DIMENSIONS ARE IN INCHES				1075 RICHARD AVE. SANTA CLARA, CA 95050 (408)727.5218 FAX (408)988.3342 E-MAIL : eng@e-fab.com	
CAD ENG. ACoutinho	DATE: 12/3/2015			CUSTOMER E-Fab, Inc.	
CHECK JBanks	DATE: 12/3/2015	SIZE A	FSCM NO. NA		
LINEAR TOLERANCES .XXX ± .005 .XX ± .010 .X ± .020	<small>THE DWG AND SPECIFICATION CONTAINED HEREON ARE PROPRIETARY AND MUST NOT BE USED, COPIED, REPRODUCED OR OTHERWISE DEALT WITH NOR ITS CONTENTS COMMUNICATED TO OTHERS EXCEPT IN ACCORDANCE WITH WRITTEN INSTRUCTIONS RECEIVED FROM E-FAB, INC.</small>	TITLE: Coated Stiffener			
ANGULAR TOLERANCES ± °		MATERIAL NOTE 1	SCALE NA	FILE No. EFI-XXXX1	SHEET
	FINISH NOTE 2				

REVISIONS				
ZONE	REV	DESCRIPTION	DATE	APPROVED
NA	F1	Ref. total thk (0.100) and dim 0.100 remove matte from NOTE 2	1/17/2020	PKapa

STANDARD TABLE SINGLE LAYER

NOT COATED

EFI-XXXXX0

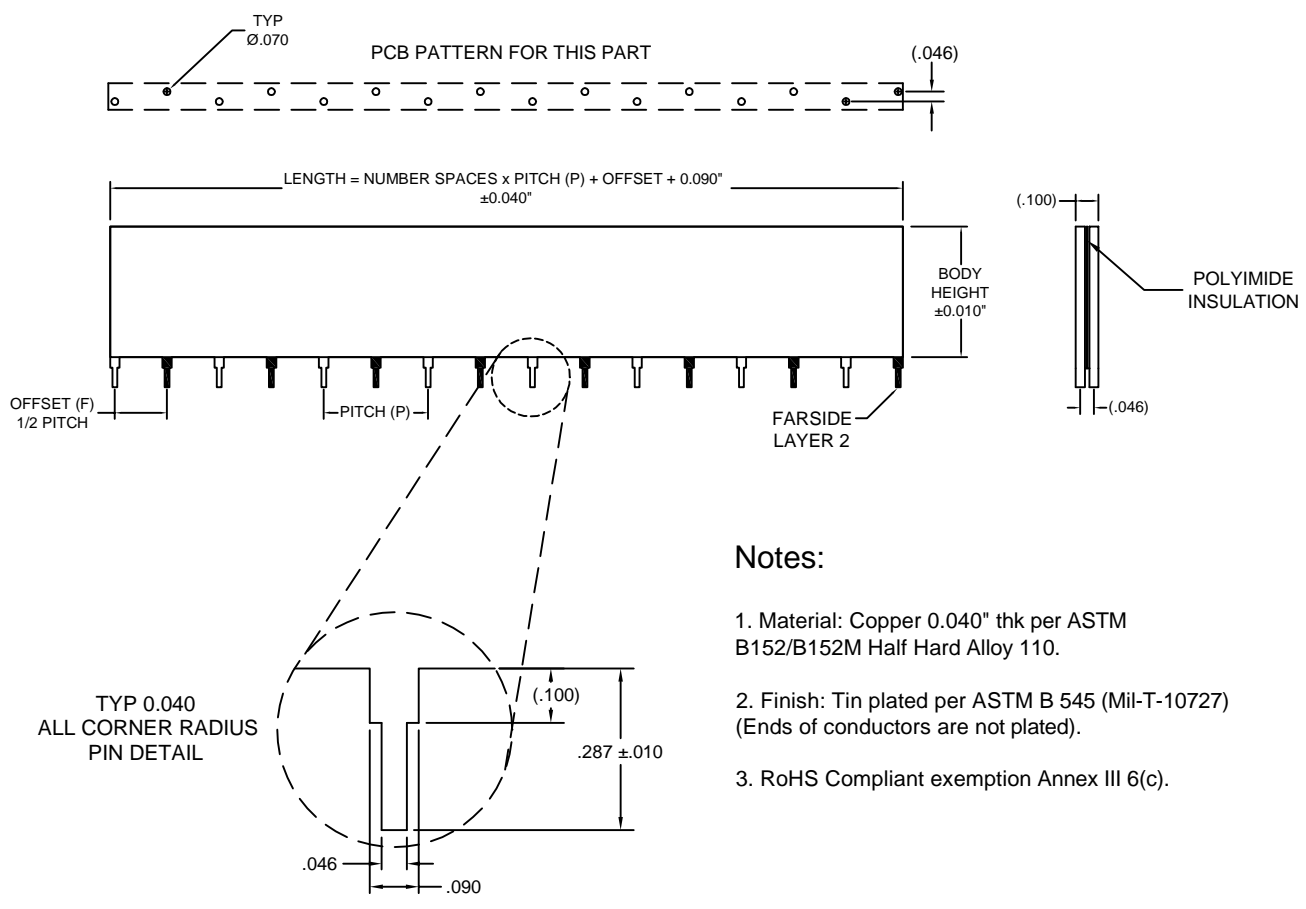
BODY HEIGHT
 1 -- 0.250"
 2 -- 0.375"
 3 -- 0.500"
 4 -- 1.000"

NUMBER OF SPACES PER SINGLE LAYER
 01, 02, 03...10, etc.

NUMBER OF SPACES IS EQUIVALENT TO THE NUMBER OF PINS MINUS ONE PIN

PITCH (P)
 DISTANCE BETWEEN PINS ON A SINGLE LAYER
 11 -- 0.500"
 22 -- 1.000"
 33 -- 1.500"
OFFSET (F) = 1/2 PITCH
 DISTANCE FROM PIN 1 ON LAYER 1 TO PIN 1 ON LAYER 2 ON REPETITIVE PATTERN PART
 11 -- 0.250"
 22 -- 0.500"
 33 -- 0.750"


A DOUBLE LAYER PWR / GND BUS BAR / STIFFENER IS MADE FROM TWO SINGLE LAYER BUS BAR / STIFFENER CHOSEN BY COMPLETING THE STANDARD ABOVE.



Notes:

1. Material: Copper 0.040" thk per ASTM B152/B152M Half Hard Alloy 110.
2. Finish: Tin plated per ASTM B 545 (Mil-T-10727) (Ends of conductors are not plated).
3. RoHS Compliant exemption Annex III 6(c).

EFFECTIVE DEC. 10, 2015

UNLESS OTHERWISE SPECIFIED DIMENSIONS ARE IN INCHES		 <p>1075 RICHARD AVE. SANTA CLARA, CA 95050 (408)727.5218 FAX (408)988.3342 E-MAIL : eng@e-fab.com</p>	
CAD ENG. ACoutinho	DATE: 12/3/2015		
CHECK JBanks	DATE: 12/3/2015	CUSTOMER	
LINEAR TOLERANCES .XXX ± .005 .XX ± .010 .X ± .020		E-Fab, Inc.	
ANGULAR TOLERANCES ± °		SIZE A	FSCM NO. NA
MATERIAL NOTE 1 FINISH NOTE 2		DWG NO. EFI-XXXXX0	REV F1
		TITLE: 2 Layer (Pwr/Gnd) Non-coated Buss Bar	
		SCALE NA	FILE No. EFI-XXXXX0
		SHEET	1 of 1

THE DWG AND SPECIFICATION CONTAINED HEREON ARE PROPRIETARY AND MUST NOT BE USED, COPIED, REPRODUCED OR OTHERWISE DEALT WITH NOR ITS CONTENTS COMMUNICATED TO OTHERS EXCEPT IN ACCORDANCE WITH WRITTEN INSTRUCTIONS RECEIVED FROM E-FAB, INC.

REVISIONS				
ZONE	REV	DESCRIPTION	DATE	APPROVED
NA	F1	Ref. total thk (0.100) and dim 0.100 remove matte from NOTE 2	1/17/2020	PKapa

STANDARD TABLE SINGLE LAYER

EPOXY COATED

EFI-XXXXX1

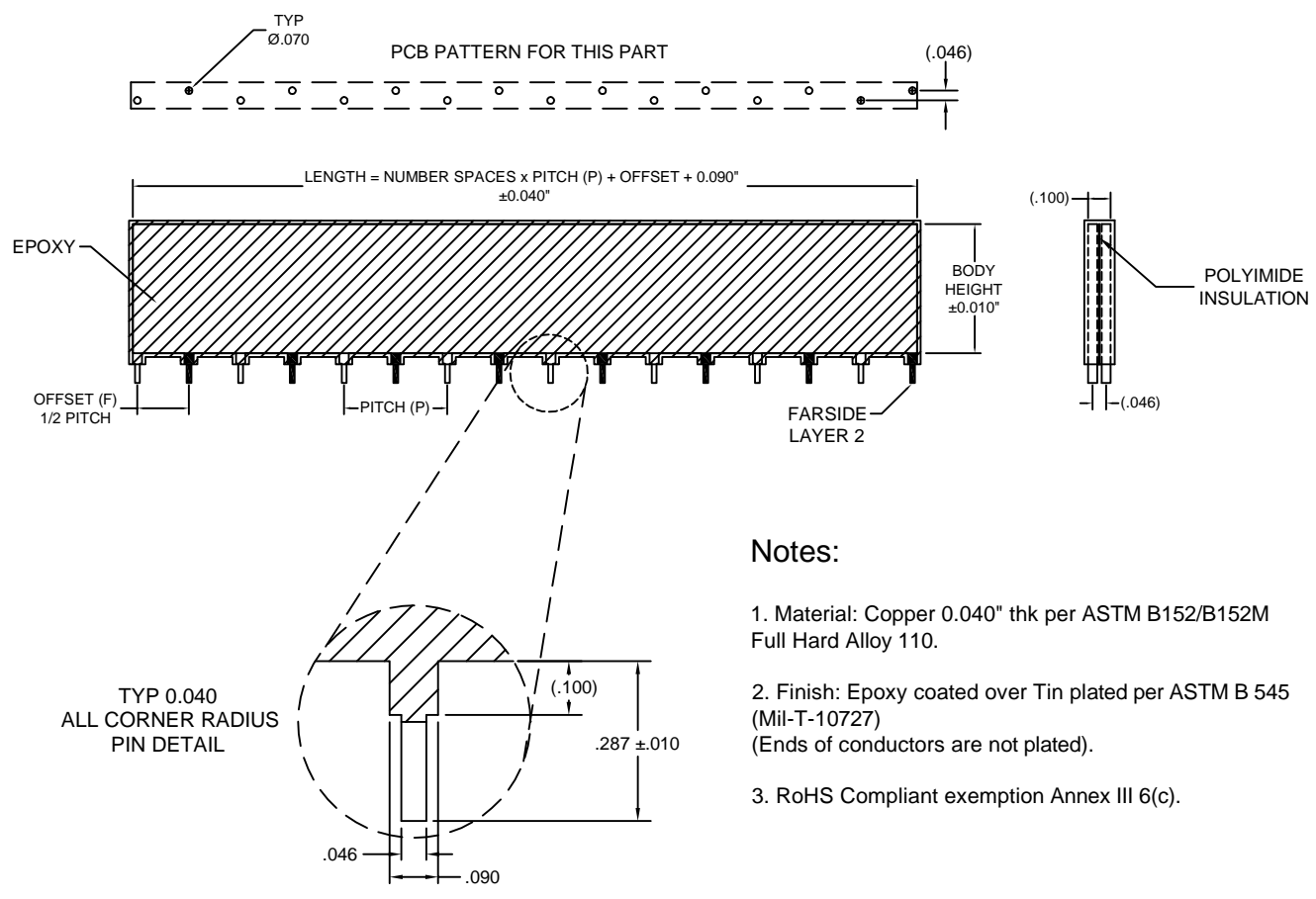
BODY HEIGHT
 1 -- 0.250"
 2 -- 0.375"
 3 -- 0.500"
 4 -- 1.000"

NUMBER OF SPACES PER SINGLE LAYER
 01, 02, 03...10, etc.

NUMBER OF SPACES IS EQUIVALENT TO THE NUMBER OF PINS MINUS ONE PIN

PITCH (P)
 DISTANCE BETWEEN PINS ON A SINGLE LAYER
 11 -- 0.500"
 22 -- 1.000"
 33 -- 1.500"
OFFSET (F) = 1/2 PITCH
 DISTANCE FROM PIN 1 ON LAYER 1 TO PIN 1 ON LAYER 2 ON REPETITIVE PATTERN PART
 11 -- 0.250"
 22 -- 0.500"
 33 -- 0.750"


A DOUBLE LAYER PWR / GND BUS BAR / STIFFENER IS MADE FROM TWO SINGLE LAYER BUS BAR / STIFFENER CHOSEN BY COMPLETING THE STANDARD ABOVE.



Notes:

1. Material: Copper 0.040" thk per ASTM B152/B152M Full Hard Alloy 110.
2. Finish: Epoxy coated over Tin plated per ASTM B 545 (Mil-T-10727) (Ends of conductors are not plated).
3. RoHS Compliant exemption Annex III 6(c).

EFFECTIVE DEC. 10, 2015

UNLESS OTHERWISE SPECIFIED DIMENSIONS ARE IN INCHES				1075 RICHARD AVE. SANTA CLARA, CA 95050 (408)727.5218 FAX (408)988.3342 E-MAIL : eng@e-fab.com					
CAD ENG.	ACoutinho			DATE:	12/3/2015	CUSTOMER E-Fab, Inc.			
CHECK	JBanks	DATE:	12/3/2015	SIZE	FSCM NO.				
LINEAR TOLERANCES .XXX = ± .005 .XX = ± .010 .X = ± .020		THE DWG AND SPECIFICATION CONTAINED HEREON ARE PROPRIETARY AND MUST NOT BE USED, COPIED, REPRODUCED OR OTHERWISE DEALT WITH NOR ITS CONTENTS COMMUNICATED TO OTHERS EXCEPT IN ACCORDANCE WITH WRITTEN INSTRUCTIONS RECEIVED FROM E-FAB, INC.		SIZE	NA	DWG NO.	EFI-XXXXX1	REV	
ANGULAR TOLERANCES				MATERIAL		A		TITLE:	2 Layer (Pwr/Gnd) Coated Buss Bar
NOTE 1		FINISH		SCALE	NA	FILE No.	EFI-XXXXX1	SHEET	1 of 1
		NOTE 2							